

**Dr. Brian L Wilk, DMD**  
 Highpoint Dental Medicine  
 200 Highpoint Drive, Suite 220,  
 Chalfont, PA, USA  
 highpointdental.com  
 drwilk@highpointdental.com



**Tony Cirigliano, CDT**  
 Broadway Dental Laboratory  
 301 East Pennsylvania Blvd.,  
 Feasterville, PA, USA  
 broadway-dental.net



**Barry P. Levin, DMD**  
 Diplomate, American Board of Periodontology  
 Clinical Associate Professor, University of Pennsylvania  
 Center for Periodontics and Dental Implant Surgery  
 7848 Old York Rd. Suite 100, Elkins Park, PA  
 www.aperiodoc.com

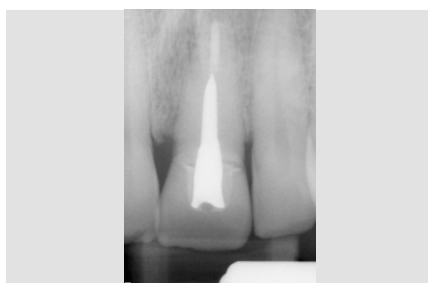


## Immediate placement and immediate provisionalization

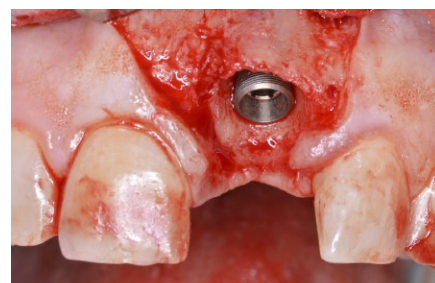
A 41-year old male presented a fracture of the maxillary left central incisor. Immediate placement and immediate provisionalization was performed with the ASTRA TECH Implant System EV. The permanent restoration was made, utilizing ATLANTIS IO FLO scan body, an iTero intraoral digital scanner and an ATLANTIS patient-specific abutment. Implant treatment of the subgingival fracture of tooth #9 was selected as the more efficient and predictable therapy for this case. By further leveraging technology such as intraoral scanning, the treatment process is further streamlined with a digital workflow that supports an optimal and patient-specific outcome.



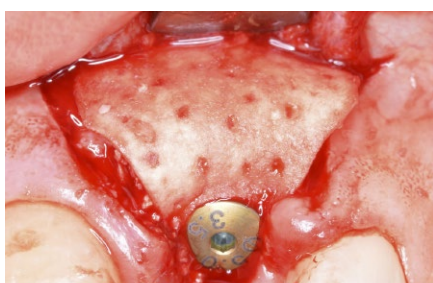
**1.** Pre-op of maxillary central incisor #9 (#21) with a fracture under the gingival margin.



**2.** Radiograph showing horizontal root fracture.



**3.** Immediate placement of OsseoSpeed EV 4.2C x 13.0 mm implant approximately 3 mm apical to the anticipated facial mucosal zenith of the final restoration.



**4.** Adaption of SYMBIOS PerioDerm GBR and soft tissue thickening via tissue punch over bone allograft inside and external to facial cortical plate.



**5.** Primary, transmucosal closure with resorbable sutures.



**6.** Temp Abutment EV 4.2 in titanium with color-coded corresponding abutment screw.



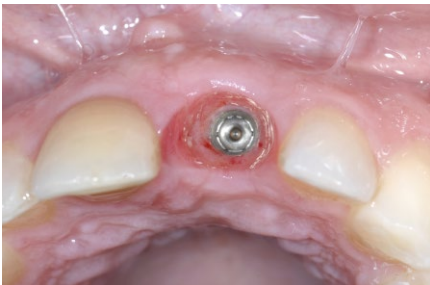
**7.** Same-day provisionalization using the temporary abutment in titanium and flowable composite resin. The temporary is screw retained and torqued to 15 Ncm. The provisional has no occlusal contact with opposing mandibular arch and only light proximal contacts.



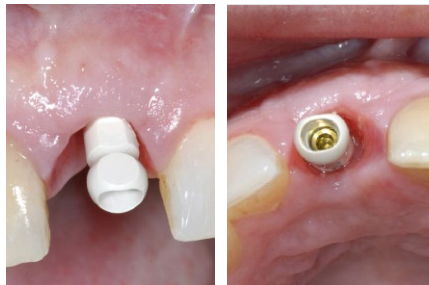
**8.** Completed temporary restoration obturated with Teflon tape over the screw access and closed with flowable composite and polished.



**9.** ATLANTIS IO FLO impression component used during intraoral scanning for ATLANTIS Abutment order.



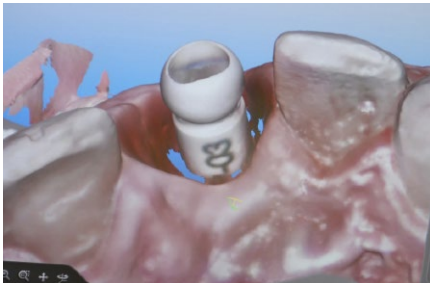
**10.** Eight weeks post extraction and implant placement. As a result of immediate provisionalization, the interdental papillae were preserved and the emergence profile was excellent.



**11.** Intraoral scanning was performed with an ATLANTIS IO FLO seated in the OsseoSpeed EV implant. Eight weeks post-op.



**12.** Intraoral scanning for ATLANTIS Abutments with the iTero scanner.



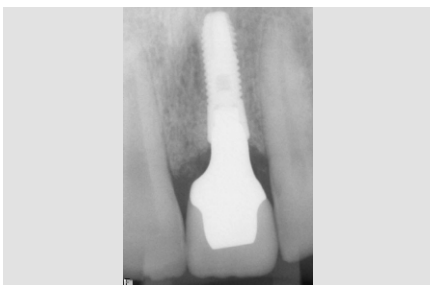
**13.** Lingual view of the iTero scan.



**14.** iTero model with crown in place.



**15.** ATLANTIS patient-specific abutment in zirconia, designed specifically to seat in one-position-only on OsseoSpeed EV implants, is placed and torqued to 25 Ncm.



**16.** Radiograph of the final result includes e.max crown cemented to the abutment.



**17.** Healthy tissue response and natural looking esthetics achieved with final restoration.



**18.** Final smile.

This case report is published as an inspiration for you as a clinician and not necessarily as a recommendation from DENTSPLY Implants.